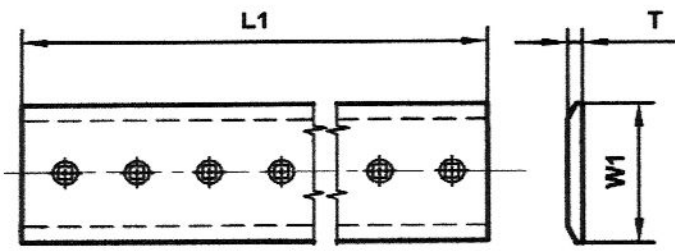


# INTERNATIONAL (IHC) & DRESSER-DOZER & SACRAPERS

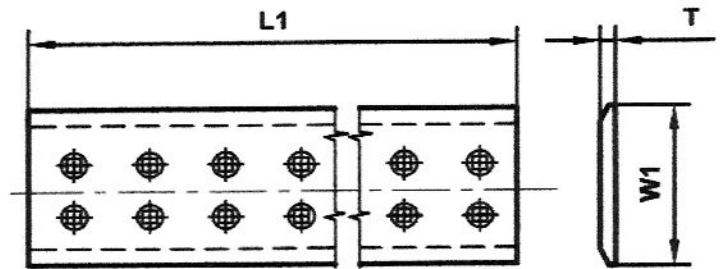
Cutting Edges



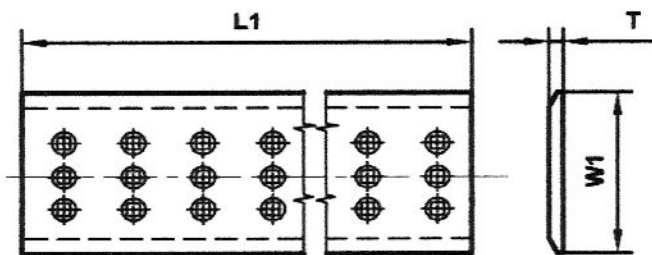
TYPE 1



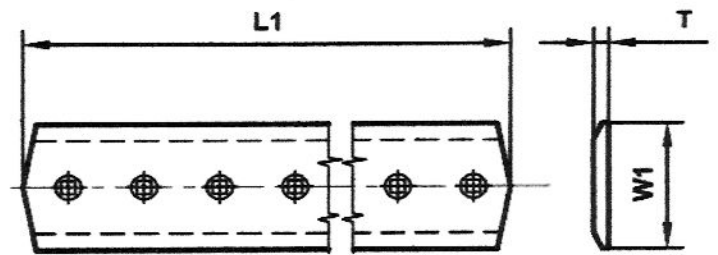
TYPE 2



TYPE 3



TYPE 4



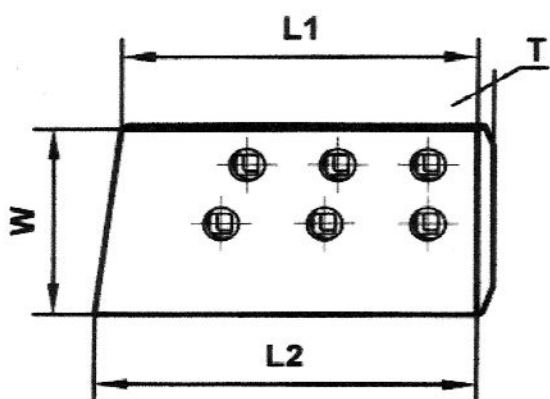
# INTERNATIONAL (IHC) & DRESSER-DOZER & SACRAPERS

End Bits

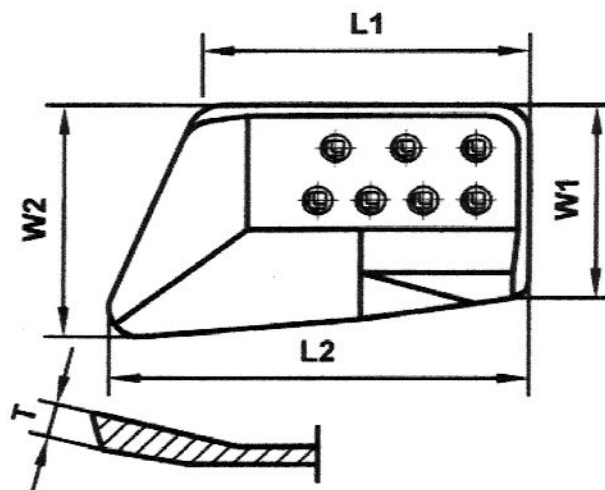


**T O U G H  
C O M P O N E N T S**

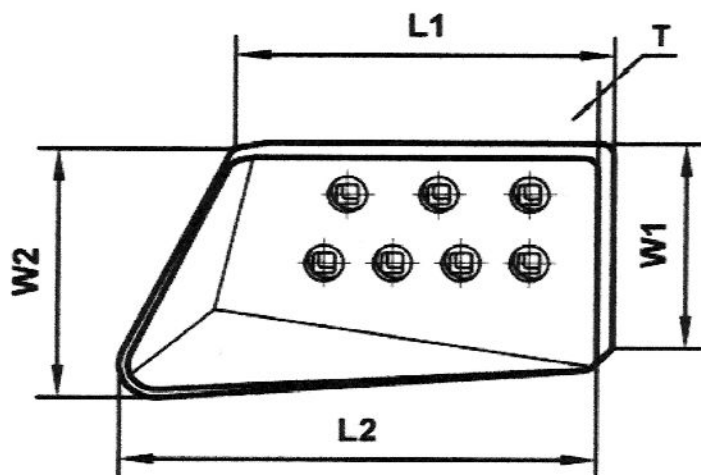
**TYPE 1**  
(Finish Dozing)



**TYPE 3**  
(General Duty)



**TYPE 4**  
(Hot Cupped)



# INTERNATIONAL (IHC) & DRESSER-DOZER & SACRAPERS

Cutting Edges and End Bits



**T O U G H  
C O M P O N E N T S**

Tractor Type	Blade Model	O.E.M. Part Nr.	MTM Number	Ref.	Description	No Pcs	Millimeters					QI ty.	Nr. H.	Bolt Ø	W. Kg.
							W1	W2	L1	L2	T				
D-500 Hough	Cushioned Dozer	211117H1			C.E. BULL STD CTR	1	254		3353		25	MT2	26	7/8"	159,7 0,0
D-400 Hough	Modified "U"	323666R1	004-Q00-39	1	C.E. BULL STD CTR	1	254		3194		25	MT2	21	1"	152,1
D-500 Hough		323671R1			E.B. BULL STD	1									0,0
D-500 Hough		323672R1				E.B. BULL STD	1								0,0
D-120C Hough	Straight	197896H1			C.E. BULL STD CTR	1									0,0
D-120C Hough		705604C1	004-934-L79	4	E.B. BULL STD LH HC	1	255	295	418	537	29	MT2	8	7/8"	31,0
D-120C Hough		705605C1	004-934-R79	4	E.B. BULL STD RH HC	1	255	295	418	537	29	MT2	8	7/8"	31,0
D-400 Hough	Straight	623980C1	004-Q00-56		C.E. BULL STD	2									0,0
D-500 Hough		193996H1			C.E. BULL STD CTR	1									0,0
D-500 Hough		705604C1	004-934-L79	4	E.B. BULL STD LH HC	1	255	295	418	537	29	MT2	8	7/8"	31,0
D-500 Hough		705605C1	004-934-R79	4	E.B. BULL STD RH HC	1	255	295	418	537	29	MT2	8	7/8"	31,0
D-120B Hough	Wide	319038R1			C.E. BULL STD CTR	1									0,0
D-120B Hough		705604C1	004-934-L79	4	E.B. BULL STD LH HC	1	255	295	418	537	29	MT2	8	7/8"	31,0
D-120B Hough		705605C1	004-934-R79	4	E.B. BULL STD RH HC	1	255	295	418	537	29	MT2	8	7/8"	31,0
D-120B Hough	Narrow	299581R1	004-Q00-30	1	C.E. BULL STD CTR	1	254		2740		25	MT2	18	7/8"	130,5
D-120B Hough		623978C1	004-Q00-31	1	C.E. BULL STD CTR	2	254		1368		25	MT2	9	7/8"	65,2
D-120B Hough		705604C1	004-934-L79	4	E.B. BULL STD LH HC	1	255	295	418	537	29	MT2	8	7/8"	31,0
D-120B Hough		705605C1	004-934-R79	4	E.B. BULL STD RH HC	1	255	295	418	537	29	MT2	8	7/8"	31,0
D-100B Hough	Straight	197896H1			C.E. BULL STD CTR	1									0,0
D-100B Hough		198169H1			E.B. BULL STD LH	1									0,0
D-100B Hough		198170H1			E.B. BULL STD RH	1									0,0
D-100B Hough		290222R2			E.B. BULL STD LH	1									0,0
D-100B Hough		290223R2			E.B. BULL STD RH	1									0,0
D-100B Hough	Modified "U"	197896H1			C.E. BULL STD CTR	1									0,0
D-100B Hough		205988H1			E.B. BULL STD RH	1									0,0
D-100B Hough		205989H1			E.B. BULL STD LH	1									0,0
D-100 Hough		298856R1			C.E. BULL STD CTR	1									0,0
D-100 Hough		198169H1			E.B. BULL STD LH	1									0,0
D-100 Hough		198170H1			E.B. BULL STD RH	1									0,0
D-100 Hough		290222R2			E.B. BULL STD LH	1									0,0
D-100 Hough		290223R2			E.B. BULL STD RH	1									0,0
D-90C Hough		198394H1			C.E. BULL STD CTR	1									0,0
D-90C Hough		198169H1			E.B. BULL STD LH	1									0,0
D-90C Hough		198170H1			E.B. BULL STD RH	1									0,0
D-90C Hough		290222R2			E.B. BULL STD LH	1									0,0
D-90C Hough		290223R2			E.B. BULL STD RH	1									0,0
D-90C Hough		877526C1			E.B. BULL STD LH	1									0,0
D-90C Hough		877527C1			E.B. BULL STD RH	1									0,0
D-90C Hough		198394H1			C.E. BULL STD CTR	1									0,0
D-90C Hough		205988H1			E.B. BULL STD RH	1									0,0
D-90C Hough		205989H1			E.B. BULL STD LH	1									0,0
TD-40 TD-40B	Semi "U"	730258C1			C.E. BULL STD CTR	3									0,0
TD-40 TD-40B		730281C1			E.B. BULL STD RH	1									0,0
TD-40 TD-40B		730280C1			E.B. BULL STD LH	1									0,0
TD-40 TD-40B	Full "U"	1208121H1			C.E. BULL STD CTR	2									0,0
TD-40 TD-40B		1208122H1			C.E. BULL STD AMBI	2									0,0
TD-40 TD-40B		1248985H1			C.E. BULL STD CTR HD	2									0,0

# INTERNATIONAL (IHC) & DRESSER-DOZER & SACRAPERS

Cutting Edges and End Bits



Tractor Type	Blade Model	O.E.M. Part Nr.	MTM Number	Ref.	Description	No Pcs	Millimeters					QI ty.	Nr. H.	Bolt Ø	W. Kg.
							W1	W2	L1	L2	T				
TD-40 TD-40B		1248986H1			C.E. BULL STD AMBI HD	2									0,0
		1249730H1			E.B. BULL STD RH	1									0,0
		1249729H1			E.B. BULL STD LH	1									0,0
TD-25C	25G-2	323667R1	004-Q00-40	1	C.E. BULL STD CTR	1	254		3683		25	MT2	24	1"	175,4
TD-25E	25G-3	623976C1	004-Q00-41	1	C.E. BULL STD CTR	1	254		1185		25	MT2	8	1"	56,4
TD-25G	30G	623975C1	004-Q00-42	1	C.E. BULL STD AMBI	2	254		1246		25	MT2	8	1"	59,3
TD-30		646330C1	001-934-L18	4	E.B. BULL STD LH HC	1	255	295	418	537	29	MT2	7	1"	30,5
		646331C1	001-934-R18	4	E.B. BULL STD RH HC	1	255	295	418	537	29	MT2	7	1"	30,5
TD-30	30D	323666R1	004-Q00-39	1	C.E. BULL STD CTR	1	254		3194		25	MT2	21	1"	152,1
		319097R1		2	C.E. BULL STD AMBI										0,0
		323671R1		1	E.B. BULL STD LH										0,0
		323672R1		1	E.B. BULL STD RH										0,0
TD-25C	25D-2	623979C1	004-Q00-36	1	C.E. BULL STD CTR FD	2	254		1520		25	MT2	10	1"	72,4
	25D-3	711526C1	004-Q00-38	1	C.E. BULL STD CTR HD	2	254		1520		40	MT2	10	1"	115,8
	Semi "U"	646328C1	004-977-L82	4	E.B. BULL STD LH HC	1	255	300	515	615	35	MT2	8	1"	35,0
		646329C1	004-977-R82	4	E.B. BULL STD RH HC	1	255	300	515	615	35	MT2	8	1"	35,0
		711529C1			E.B. BULL STD LH	1									0,0
		711530C1			E.B. BULL STD RH	1									0,0
TD-25B	Serie B	623977C1	004-Q00-37	1	C.E. BULL STD CTR	2	254		2016		25	MT2	13	1"	96,0
TD-25C	Cushion Dozer	646330C1	001-934-L18	4	E.B. BULL STD LH HC	1	255	295	418	537	29	MT2	7	1"	30,5
TD-30		646331C1	001-934-R18	4	E.B. BULL STD RH HC	1	255	295	418	537	29	MT2	7	1"	30,5
TD-25B	25BD	284870R1	004-Q00-35	1	C.E. BULL STD CTR	1	254		3041		25	MT2	20	7/8"	144,8
TD-25C	25D-1	623980C1	004-Q00-56		C.E. BULL STD CTR	2									0,0
TD-25E	25D-2	705607C1			E.B. BULL STD RH	1									0,0
TD-25G	25D-3	705606C1			E.B. BULL STD LH	1									0,0
	Semi "U"														0,0
TD-24	24G	298868R1	004-Q00-32	1	C.E. BULL STD CTR	1	254		3460		25	MT2	23	7/8"	164,8
TD-25	25G	623982C1	004-Q00-33	1	C.E. BULL STD CTR	1	254		1406		25	MT2	9	7/8"	67,0
TD-25B	25G-2	623981C1	004-Q00-34	1	C.E. BULL STD AMBI	2	254		1025		25	MT2	7	7/8"	48,8
	25G-3	705608C1	004-934-L77	4	E.B. BULL STD LH HC	1	255	295	418	537	29	MT2	7	7/8"	31,0
		705609C1	004-934-R77	4	E.B. BULL STD RH HC	1	255	295	418	537	29	MT2	7	7/8"	31,0
TD-24	24G	298867R1	004-Q00-43	1	C.E. BULL STD CTR	1	254		2895		25	MT2	19	7/8"	137,9
		290702R1		1	E.B. BULL STD LH										0,0
		290703R1		1	E.B. BULL STD RH										0,0
TD-24	24D	299581R1	004-Q00-30	1	C.E. BULL STD CTR	1	254		2740		25	MT2	18	7/8"	130,5
TD-25	25D	623978C1	004-Q00-31	1	C.E. BULL STD CTR	2	254		1368		25	MT2	9	7/8"	65,2
TD-25B	25D-2	705604C1	004-934-L79	4	E.B. BULL STD LH HC	1	255	295	418	537	29	MT2	8	7/8"	31,0
	25D-3	705605C1	004-934-R79	4	E.B. BULL STD RH HC	1	255	295	418	537	29	MT2	8	7/8"	31,0
TD-24	24D	298864R1	004-Q00-29	1	C.E. BULL STD CTR	1	254		2590		25	MT2	17	7/8"	123,3
		290222R2		1	E.B. BULL STD LH										0,0
		290223R2		1	E.B. BULL STD RH										0,0
TD-20E	LGP	623985C1	004-Q00-17	1	C.E. BULL STD CTR	2	254		1520		25	MT2	10	7/8"	72,4
		734825C1		1	E.B. BULL STD RH										
		734824C1		1	E.B. BULL STD LH										0,0
TD-20E	20D-2	645200C1	004-Q00-25	1	C.E. BULL STD CTR FD	1	254		1014		25	MT2	7	7/8"	48,3
TD-20G	Semi "U"	645201C1	004-Q00-26	1	C.E. BULL STD AMBI FD	2	254		808		25	MT2	5	7/8"	38,5
		711527C1	004-Q00-27	1	C.E. BULL STD CTR HD	1	254		1014		40	MT2	7	7/8"	77,3

# INTERNATIONAL (IHC) & DRESSER-DOZER & SACRAPERS

Cutting Edges and End Bits



**T O U G H  
COMPONENTS**

Tractor Type	Blade Model	O.E.M. Part Nr.	MTM Number	Ref.	Description	No Pcs	Millimeters					QI ty.	Nr. H.	Bolt Ø	W. Kg.	
							W1	W2	L1	L2	T					
TD-20E	20D-2	711528C1	004-Q00-28	1	C.E. BULL STD AMBI HD	2	254		808		40	MT2	5	7/8"	61,6	
TD-20G	Semi "U"	646332C1	004-929-L78	4	E.B. BULL STD LH HC	1	254	295	423	508	25	MT2	7	7/8"	25,0	
		646333C1	004-929-R78	4	E.B. BULL STD RH HC	1	254	295	423	508	25	MT2	7	7/8"	25,0	
		711531C1			E.B. BULL STD LH	1									0,0	
		711532C1			E.B. BULL STD RH	1									0,0	
		734528C1			C.E. BULL STD CTR	1									0,0	
	734529C1			C.E. BULL STD AMBI	2									0,0		
	734532C1			E.B. BULL STD RH	1									0,0		
	734531C1			E.B. BULL STD LH	1									0,0		
TD-20B	20C	608007C1	004-Q00-22	1	C.E. BULL STD CTR	1	254		2540		25	MT2	17	7/8"	121,0	
TD-20C	Serie B&C	623984C1	004-Q00-23	1	C.E. BULL STD CTR	1	254		1111		19	MT2	7	7/8"	40,2	
		623983C1	004-Q00-24	1	C.E. BULL STD AMBI	2	254		711		19	MT2	5	7/8"	25,7	
	20D-1	646332C1	004-929-L78	4	E.B. BULL STD LH HC	1	254	295	423	508	25	MT2	7	7/8"	25,0	
	20D-2	646333C1	004-929-R78	4	E.B. BULL STD RH HC	1	254	295	423	508	25	MT2	7	7/8"	25,0	
	Semi "U"	711531C1			E.B. BULL STD LH	1									0,0	
		711532C1			E.B. BULL STD RH	1									0,0	
TD-20C	20D-2	623986C1	004-Q00-20	1	C.E. BULL STD CTR	1	254		758		19	MT2	5	7/8"	27,4	
		646482C1	004-Q00-21	1	C.E. BULL STD AMBI	2	254		889		19	MT2	6	7/8"	32,2	
	Straight	626006C1	004-642-L77	1	E.B. BULL STD LH FD	1	254	254	425	425	25	MT2	7	7/8"	20,2	
		626007C1	004-642-R77	1	E.B. BULL STD RH FD	1	254	254	425	425	25	MT2	7	7/8"	20,2	
		705608C1	004-934-L77	4	E.B. BULL STD LH HC	1	255	295	418	537	29	MT2	7	7/8"	31,0	
		705609C1	004-934-R77	4	E.B. BULL STD RH HC	1	255	295	418	537	29	MT2	7	7/8"	31,0	
TD-20	20BD	298856R1			C.E. BULL STD CTR	1								0,0		
TD-20B	Serie B&C	623986C1	004-Q00-20	1	C.E. BULL STD CTR	3	254		758		19	MT2	5	7/8"	27,4	
		626006C1	004-642-L77	1	E.B. BULL STD LH FD	1	254	254	425	425	25	MT2	7	7/8"	20,2	
	20D-1	626007C1	004-642-R77	1	E.B. BULL STD RH FD	1	254	254	425	425	25	MT2	7	7/8"	20,2	
	20D-2	705608C1	004-934-L77	4	E.B. BULL STD LH HC	1	255	295	418	537	29	MT2	7	7/8"	31,0	
		705609C1	004-934-R77	4	E.B. BULL STD RH HC	1	255	295	418	537	29	MT2	7	7/8"	31,0	
	TD-18	20D	298856R1			C.E. BULL STD CTR	1									0,0
623986C1			004-Q00-20	1	C.E. BULL STD CTR	3	254		758		19	MT2	5	7/8"	27,4	
198169H1					E.B. BULL STD LH	1									0,0	
198170H1					E.B. BULL STD RH	1									0,0	
290222R2					E.B. BULL STD LH	1									0,0	
290223R2					E.B. BULL STD RH	1									0,0	
TD-20E	18G-2	646258C1	004-Q00-18	1	C.E. BULL STD CTR	2	254		1785		25	MT2	12	7/8"	85,0	
		TD-20G	Bullgrader	646262C1			E.B. BULL STD RH	1								0,0
				646261C1			E.B. BULL STD LH	1								0,0
				712628C1			E.B. BULL STD RH	1								0,0
				712627C1			E.B. BULL STD RH	1								0,0
TD-20	20BG	298857R1	004-Q00-15	1	C.E. BULL STD CTR	1	254		3048		25	MT2	20	7/8"	145,2	
		TD-20B	Serie B&C	623985C1	004-Q00-17	1	C.E. BULL STD CTR	2	254		1520		25	MT2	10	7/8"
	20G-2			626004C1			E.B. BULL STD LH	1								0,0
	20G-3			626005C1			E.B. BULL STD RH	1								0,0
	Bullgrader			619569C1			E.B. BULL STD LH	1								
		20G-2	619570C1			E.B. BULL STD RH	1								0,0	
TD-20	20G	315071R1	004-Q00-16	1	C.E. BULL STD CTR	1	254		3127		25	MT2	21	7/8"	148,9	
		298859R1	004-641-L73	1	E.B. BULL STD LH FD	1	254	254	400	400	25	MT2	7	7/8"	19,1	

# INTERNATIONAL (IHC) & DRESSER-DOZER & SACRAPERS

Cutting Edges and End Bits



**T O U G H  
C O M P O N E N T S**

Tractor Type	Blade Model	O.E.M. Part Nr.	MTM Number	Ref.	Description	No Pcs	Millimeters					QI ty.	Nr. H.	Bolt Ø	W. Kg.	
							W1	W2	L1	L2	T					
TD-20	20G	298860R1	004-641-R73	1	E.B. BULL STD RH FD	1	254	254	400	400	25	MT2	7	7/8"	19,1	
		290185R3	004-934-L73	4	E.B. BULL STD LH HC	1	255	295	418	537	29	MT2	7	7/8"	31,0	
		290186R3	004-934-R73	4	E.B. BULL STD RH HC	1	255	295	418	537	29	MT2	7	7/8"	31,0	
TD-18	18G	298857R1	004-Q00-15	1	C.E. BULL STD CTR	1	254		3048		25	MT2	20	7/8"	145,2	
		298859R1	004-641-L73	1	E.B. BULL STD LH FD	1	254	254	400	400	25	MT2	7	7/8"	19,1	
		298860R1	004-641-R73	1	E.B. BULL STD RH FD	1	254	254	400	400	25	MT2	7	7/8"	19,1	
		290185R3	004-934-L73	4	E.B. BULL STD LH HC	1	255	295	418	537	29	MT2	7	7/8"	31,0	
		290186R3	004-934-R73	4	E.B. BULL STD RH HC	1	255	295	418	537	29	MT2	7	7/8"	31,0	
TD-15B	15G-1	623992C1	004-Q00-14	1	C.E. BULL STD CTR	2	203		1216		19	MT2	8	3/4"	35,2	
	15G-2	626001C1	004-616-L71	1	E.B. BULL STD LH FD	1	203	203	336	388	19	MT2	6	3/4"	9,7	
	15G-3	626002C1	004-616-R71	1	E.B. BULL STD RH FD	1	203	203	336	388	19	MT2	6	3/4"	10,0	
		619563C1	004-016-L71	3	E.B. BULL STD LH GD	1	210	250	365	430	30	MT2	6	3/4"	16,0	
		619564C1	004-016-R71	3	E.B. BULL STD RH GD	1	210	250	365	430	30	MT2	6	3/4"	16,0	
TD-15E	Straight LGP	1211642H1			C.E. BULL STD CTR	1									0,0	
		1211941H1			C.E. BULL STD AMBI	2									0,0	
		738648C1			E.B. BULL STD RH	1									0,0	
		738647C1			E.B. BULL STD LH	1									0,0	
	Semi "U"	1211642H1				C.E. BULL STD CTR	1									0,0
		623988C1	004-Q00-04	1	C.E. BULL STD AMBI	2	203		809		19	MT2	5	3/4"	23,4	
		646335C1	004-979-R72	4	E.B. BULL STD RH HC	1	210	260	370	430	32	MT2	6	3/4"	23,0	
		646334C1	004-979-L72	4	E.B. BULL STD LH HC	1	210	260	370	430	32	MT2	6	3/4"	23,0	
		1211642H1				C.E. BULL STD CTR	1									0,0
		623988C1	004-Q00-04	1	C.E. BULL STD AMBI	2	203		809		19	MT2	5	3/4"	23,4	
		1244730H1			E.B. BULL STD RH	1								0,0		
		1244729H1			E.B. BULL STD LH	1								0,0		
TD-15B	15D	608082C1	004-Q00-12	1	C.E. BULL STD CTR	1	203		2447		19	MT2	16	3/4"	70,8	
TD-15C	15D-2	623990C1	004-Q00-13	1	C.E. BULL STD CTR	1	203		892		19	MT2	6	3/4"	25,8	
	15D-3	623989C1	004-Q00-06	1	C.E. BULL STD AMBI	2	203		777		19	MT2	5	3/4"	22,5	
	Semi "U"	646335C1	004-979-R72	4	E.B. BULL STD RH HC	1	210	260	370	430	32	MT2	6	3/4"	23,0	
		646334C1	004-979-L72	4	E.B. BULL STD LH HC	1	210	260	370	430	32	MT2	6	3/4"	23,0	
TD-15	15G	315023R1	004-Q00-10	1	C.E. BULL STD CTR	1	254		3044		25	MT2	20	3/4"	145,0	
TD-15B	15BG	623991C1	004-Q00-11	1	C.E. BULL STD CTR	2	203		1520		19	MT2	10	3/4"	44,0	
TD-15C	15G2	626001C1	004-616-L71	1	E.B. BULL STD LH FD	1	203	203	336	388	19	MT2	6	3/4"	10,0	
		626002C1	004-616-R71	1	E.B. BULL STD RH FD	1	203	203	336	388	19	MT2	6	3/4"	10,0	
		619563C1	004-016-L71	3	E.B. BULL STD LH GD	1	210	250	365	430	30	MT2	6	3/4"	16,0	
		619564C1	004-016-R71	3	E.B. BULL STD RH GD	1	210	250	365	430	30	MT2	6	3/4"	16,0	
TD-14	14GN	298846R1	004-Q00-09	1	C.E. BULL STD CTR	1	203		2438		19	MT2	16	3/4"	70,5	
TD-15	56" Ga	626001C1	004-616-L71	1	E.B. BULL STD LH FD	1	203	203	336	388	19	MT2	6	3/4"	10,0	
		626002C1	004-616-R71	1	E.B. BULL STD RH FD	1	203	203	336	388	19	MT2	6	3/4"	10,0	
		619563C1	004-016-L71	3	E.B. BULL STD LH GD	1	210	250	365	430	30	MT2	6	3/4"	16,0	
		619564C1	004-016-R71	3	E.B. BULL STD RH GD	1	210	250	365	430	30	MT2	6	3/4"	16,0	
				298848R1	004-Q00-08	1	C.E. BULL STD CTR	1	203		2895		19	MT2	19	3/4"
	14G 74" Ga	626001C1	004-616-L71	1	E.B. BULL STD LH FD	1	203	203	336	388	19	MT2	6	3/4"	10,0	
		626002C1	004-616-R71	1	E.B. BULL STD RH FD	1	203	203	336	388	19	MT2	6	3/4"	10,0	
		619563C1	004-016-L71	3	E.B. BULL STD LH GD	1	210	250	365	430	30	MT2	6	3/4"	16,0	
		619564C1	004-016-R71	3	E.B. BULL STD RH GD	1	210	250	365	430	30	MT2	6	3/4"	16,0	

# INTERNATIONAL (IHC) & DRESSER-DOZER & SACRAPERS

Cutting Edges and End Bits



**T O U G H  
C O M P O N E N T S**

Tractor Type	Blade Model	O.E.M. Part Nr.	MTM Number	Ref.	Description	No Pcs	Millimeters					Ql ty.	Nr. H.	Bolt Ø	W. Kg.
							W1	W2	L1	L2	T				
TD-15C	LGP	623989C1	004-Q00-06	1	C.E. BULL STD CTR	1	203		777		19	MT2	5	3/4"	22,5
		712742C1	004-Q00-07	1	C.E. BULL STD AMBI	2	203		1060		19	MT2	7	3/4"	30,7
		626003C1	004-617-X70	1	E.B. BULL STD AMBI FD	2	203	203	390	390	25	MT2	6	3/4"	14,8
		619559C1	004-976-L70	4	E.B. BULL STD LH HC	1	208	245	395	450	25	MT2	6	3/4"	18,0
		619560C1	004-976-R70	4	E.B. BULL STD RH HC	1	208	245	395	450	25	MT2	6	3/4"	18,0
TD-15	15D	320843R1	004-Q00-03	1	C.E. BULL STD CTR	1	203		2228		19	MT2	15	3/4"	64,5
TD-15B	15D-2	623988C1	004-Q00-04	1	C.E. BULL STD CTR	1	203		809		19	MT2	5	3/4"	23,4
TD-15C	15D-2	623987C1	004-Q00-05	1	C.E. BULL STD AMBI	2	203		708		19	MT2	5	3/4"	20,5
TD-15D	15BD	626003C1	004-617-X70	1	E.B. BULL STD AMBI FD	2	203	203	390	390	25	MT2	6	3/4"	14,8
		619559C1	004-976-L70	4	E.B. BULL STD LH HC	1	208	245	395	450	25	MT2	6	3/4"	18,0
		619560C1	004-976-R70	4	E.B. BULL STD RH HC	1	208	245	395	450	25	MT2	6	3/4"	18,0
TD-14	14DN	298842R1	004-Q00-02	1	C.E. BULL STD CTR	1	203		1641		19	MT2	11	3/4"	47,5
TD-15	56" Ga	626003C1	004-617-X70	1	E.B. BULL STD AMBI FD	2	203	203	390	390	25	MT2	6	3/4"	14,8
		619559C1	004-976-L70	4	E.B. BULL STD LH HC	1	208	245	395	450	25	MT2	6	3/4"	18,0
		619560C1	004-976-R70	4	E.B. BULL STD RH HC	1	208	245	395	450	25	MT2	6	3/4"	18,0
	14D 74" Ga	298844R1	004-Q00-01	1	C.E. BULL STD CTR	1	203		2133		19	MT2	14	3/4"	61,7
		626003C1	004-617-X70	1	E.B. BULL STD AMBI FD	2	203	203	390	390	25	MT2	6	3/4"	14,8
		619559C1	004-976-L70	4	E.B. BULL STD LH HC	1	208	245	395	450	25	MT2	6	3/4"	18,0
		619560C1	004-976-R70	4	E.B. BULL STD RH HC	1	208	245	395	450	25	MT2	6	3/4"	18,0
TD-12	LGP	717791C1	004-Q00-53	1	C.E. BULL STD CTR	2	203		1393		19	MT2	9	3/4"	40,3
		711627C1			E.B. BULL STD AMBI	2									0,0
TD-12C		738648C1			E.B. BULL STD LH	1									0,0
		738647C1			E.B. BULL STD RH	1									0,0
		623992C1	004-Q00-14	1	C.E. BULL STD CTR	2	203		1216		19	MT2	8	3/4"	35,2
		711627C1			E.B. BULL STD AMBI	2									0,0
	12D2	738648C1			E.B. BULL STD LH	1									0,0
		738647C1			E.B. BULL STD RH	1									0,0
		738648C1			E.B. BULL STD LH	1									0,0
		738647C1			E.B. BULL STD RH	1									0,0
TD-9H	LGP	1282468H1			C.E. BULL STD CTR	2									0,0
		1283144H1			E.B. BULL STD AMBI	2									0,0
	STD	1282468H1			C.E. BULL STD CTR	2									0,0
		1283143H1			E.B. BULL STD AMBI	2									0,0
TD-9B	9D Serie B	623992C1	004-Q00-14	1	C.E. BULL STD CTR	2	203		1216		19	MT2	8	3/4"	35,2
		626000C1	004-Q00-51	1	C.E. BULL STD AMBI	2	203		606		19	MT2	4	3/4"	17,5
TD-9	9D	298827R1			C.E. BULL STD CTR	1									0,0
		623995C1	004-Q00-50	1	C.E. BULL STD AMBI	2	152		606		19	MT2	4	3/4"	13,1
TD-9	9G Serie B	298832R1	004-Q00-55	1	C.E. BULL STD CTR	1	152		1825		16	MT2	12	3/4"	33,3
		623993C1	004-Q00-47	1	C.E. BULL STD CTR	2	152		911		16	MT2	6	3/4"	16,6
		623998C1			E.B. BULL STD LH	1									0,0
		623999C1			E.B. BULL STD RH	1									0,0
TD-8H	LGP	620563C1	004-Q00-45	1	C.E. BULL STD CTR	2	152		759		16	MT2	5	3/4"	13,8
		1267329H1			E.B. BULL STD AMBI	2									0,0
	STD	620563C1	004-Q00-45	1	C.E. BULL STD CTR	2	152		759		16	MT2	5	3/4"	13,8
		1267328H1			E.B. BULL STD AMBI	2									0,0
BT-8		3048921			C.E. BULL STD CTR	1								0,0	
TD-8B		3106916R1			C.E. BULL STD CTR	1								0,0	
TD-8C	8G2	954489R1	004-Q00-49	1	C.E. BULL STD CTR	1	152		1673		16	MT2	11	3/4"	30,5
TD-8E	Outside Arm	954490R1			E.B. BULL STD LH	1									0,0
TD-8G		954491R1			E.B. BULL STD RH	1									0,0

# INTERNATIONAL (IHC) & DRESSER-DOZER & SACRAPERS

Cutting Edges and End Bits



**T O U G H  
COMPONENTS**

Tractor Type	Blade Model	O.E.M. Part Nr.	MTM Number	Ref.	Description	No Pcs	Millimeters					QI ty.	Nr. H.	Bolt Ø	W. Kg.
							W1	W2	L1	L2	T				
TD-8G	Inside Arm	620690C1	004-Q00-46	1	C.E. BULL STD CTR	2	152		759		19	MT2	5	3/4"	16,4
		1209131H1			E.B. BULL STD RH	1									0,0
		1209130H1			E.B. BULL STD LH	1									0,0
TD-8C	G8H	620690C1	004-Q00-46	1	C.E. BULL STD CTR	2	152		759		19	MT2	5	3/4"	16,4
TD-8E	Inside Arm	954490R1			E.B. BULL STD LH	1									0,0
TD-8G		954491R1			E.B. BULL STD RH	1									0,0
TD-7C	7G2	623994C1	004-Q00-48	1	C.E. BULL STD CTR	1	152		1521		16	MT2	10	3/4"	27,7
TD-7E	Outside Arm	954490R1			E.B. BULL STD LH	1									0,0
		954491R1			E.B. BULL STD RH	1									0,0
TD-7E	61" Ga	620563C1	004-Q00-45	1	C.E. BULL STD CTR	2	152		759		16	MT2	5	3/4"	13,8
TD-7G	Inside Arm	1209109H1			E.B. BULL STD LH	1									0,0
		1209110H1			E.B. BULL STD RH	1									0,0
TD-7C	G7H	620563C1	004-Q00-45	1	C.E. BULL STD CTR	2	152		759		16	MT2	5	3/4"	13,8
TD-7E	G711	620529C1			E.B. BULL STD LH	1									0,0
TD-7G	Inside Arm	620530C1			E.B. BULL STD RH	1									0,0
															0,0
TD-6	6D	623993C1	004-Q00-47	1	C.E. BULL STD CTR	1	152		911		16	MT2	6	3/4"	16,6
		623995C1	004-Q00-50	1	E.B. BULL STD AMBI	2	152		606		19	MT2	4	3/4"	13,1
	6G	623994C1	004-Q00-48	1	C.E. BULL STD CTR	1	152		1521		16	MT2	10	3/4"	27,7
		623996C1			E.B. BULL STD LH	1									0,0
		623997C1			E.B. BULL STD RH	1									0,0
500C	Outside Arm	677423R1			C.E. BULL STD CTR	1								0,0	
500E		677397R1			E.B. BULL STD AMBI	2								0,0	
510C					E.B.									0,0	
511C					E.B.									0,0	
512C					E.B.									0,0	
500C	Inside Arm	677396R1			C.E. BULL STD CTR	1								0,0	
500E		677397R1			E.B. BULL STD AMBI	2								0,0	
510C					E.B.									0,0	
511C					E.B.									0,0	
T-340G	Inside Arm	623994C1	004-Q00-48	1	C.E. BULL STD CTR	1	152		1521		16	MT2	10	3/4"	27,7
500		626023C1			E.B. BULL STD LH	1								0,0	
510		626024C1			E.B. BULL STD RH	1								0,0	
511					E.B.									0,0	
270	Hydraulic	626017C1			C.E. SCR STD CTR	1									0,0
		IH1-ST0478			C.E. SCR STD	1									0,0
		626016C1			E.B. SCR STD AMBI FD	2								0,0	
		626014C1			E.B. SCR STD AMBI HD	2								0,0	
		614454C1			E.B. SCR STD AMBI EXT-H	2									0,0
		329136R4			E.B. SCR STD AMBI GD	2									0,0
295-B	Hydraulic	665632C1			C.E. SCR STD CTR FD	2								0,0	
295-D		626015C1			C.E. SCR STD CTR FD	1								0,0	
495		614453C1			C.E. SCR STD CTR HD	1								0,0	
431		IH1-ST0493			C.E. SCR STD	1								0,0	
431B		626014C1			E.B. SCR STD AMBI HD	2								0,0	
433		614454C1			E.B. SCR STD AMBI EXT-H	2								0,0	
433B		329136R4			E.B. SCR STD AMBI GD	2								0,0	



# INTERNATIONAL (IHC) & DRESSER-DOZER & SACRAPERS

Cutting Edges and End Bits



**T O U G H  
C O M P O N E N T S**

Tractor Type	Blade Model	O.E.M. Part Nr.	MTM Number	Ref.	Description	No Pcs	Millimeters					Qt ty.	Nr. H.	Bolt Ø	W. Kg.
							W1	W2	L1	L2	T				
270 2S-295 2S-495	Cable	298615R1			C.E. SCR STD CTR	1									0,0
		315560R1			E.B. SCR STD AMBI FD	2									0,0
		298640R1			E.B. SCR STD AMBI GD	2									0,0
E-200 E211 412	Elevating Scraper	626012C1			C.E. SCR STD CTR	1									0,0
		IH1-ST0259			C.E. SCR STD	1									0,0
		626013C1			E.B. SCR STD AMBI FD	2									0,0
412B	Narrow	626020C1			C.E. SCR STD CTR	1									0,0
		626021C1			E.B. SCR STD AMBI	2									0,0
		613353C1			E.B. SCR STD AMBI GD	2									0,0
		665764C1			E.B. SCR STD AMBI GD	2									0,0
412C	Elevating Scraper	1152562X1			C.E. SCR STD CTR	1									0,0
		1152563X1			E.B. SCR STD AMBI	2									0,0
E-270	Elevating Scraper	626010C1			C.E. SCR STD CTR	1									0,0
		IH1-ST0260			C.E. SCR STD	1									0,0
		626011C1			E.B. SCR STD AMBI	2									0,0
		626019C1			C.E. SCR STD CTR	1									0,0
		626022C1			E.B. SCR STD AMBI FD	2									0,0
		626008C1			E.B. SCR STD AMBI HD	2									0,0
		329136R4			E.B. SCR STD AMBI GD	2									0,0
E-295 442 442B 444 444B	Elevating Scraper	618019C1			C.E. SCR STD CTR	1									0,0
		IH1-ST0584			C.E. SCR STD	1									0,0
		640151C1			E.B. SCR STD AMBI FD	2									0,0
		626009C1			E.B. SCR STD AMBI HD	2									0,0
	Narrow	626018C1			C.E. SCR STD CTR	1									0,0
640150C1				C.E. SCR STD AMBI	2									0,0	
626008C1				E.B. SCR STD AMBI HD	2									0,0	
329136R4				E.B. SCR STD AMBI GD	2									0,0	

0,0